



## Dynalog Protocol Gateway Series for Substation Automation

DYNA-PG Series of Protocol Gateways are hardened communication devices which collect status, events and fault report data from any protection device, Energy meters inside Substation. The Gateway sends this information upstream to a Control Center and transfers commands issued from the Control Center to devices inside the substation.

### Key Features

<b>Wide Variety of Industry Standard and Proprietary Protocols support</b>	Modbus RTU/TCP
	IEC-60870-5-101/103/104
	DNP3
	IEC 61850
	IEC61131 Logic Programming
<b>Windows configuration tool for mapping of protocol &amp; parameters</b>	
<b>Diagnostic functionality with Port Mirroring to see the live data throughout &amp; Intra Protocol communication of the system</b>	

### Hardware Features

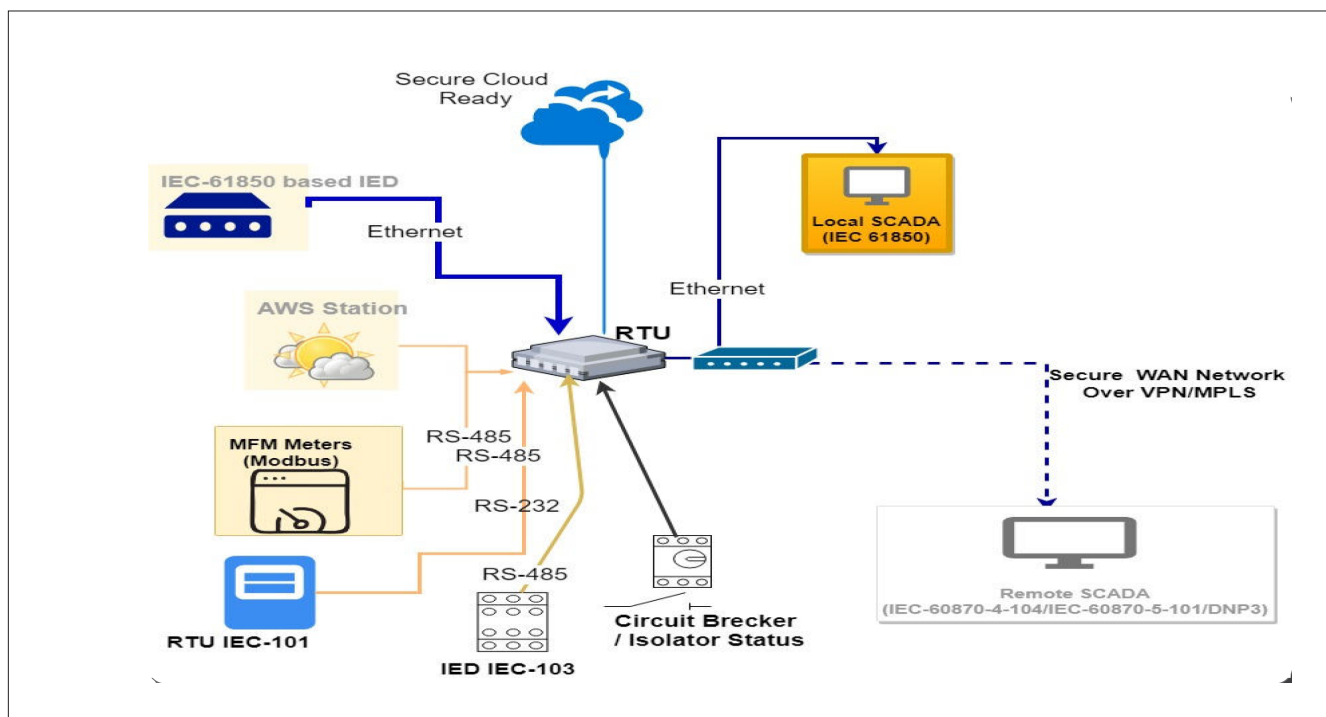
<b>CPU</b>	Low Power high speed 32 Bit ARM Processor
<b>Communication Interface</b>	Auto-sensing 10/100 Mbps port
	1 / 2 / 4 RS232 /RS485 software-selectable
	GSM, LTE port ( Optional )
<b>Memory</b>	512 MB RAM, 8 GB eMMC
<b>Operating Temperature</b>	-10 to 60 Degree
<b>Mounting</b>	DIN Rail Mounting

## Communication Protocol support

Thanks to a wide variety of data transmission capacities, the devices from the DYNA PG series can be universally used for automation and tele-control tasks:

IEC -60870-5-104	Client & Server Support
IEC -60870-5-101	Client & Server Support
IEC -60870-5-103	Client & Server Support
Modbus RTU/TCP	Client & Server Support
IEC-61850	Client & Server Support
DNP3	Client & Server Support
IEC 61131	PLC Support
IIOT Support for MQTT + Json protocol	

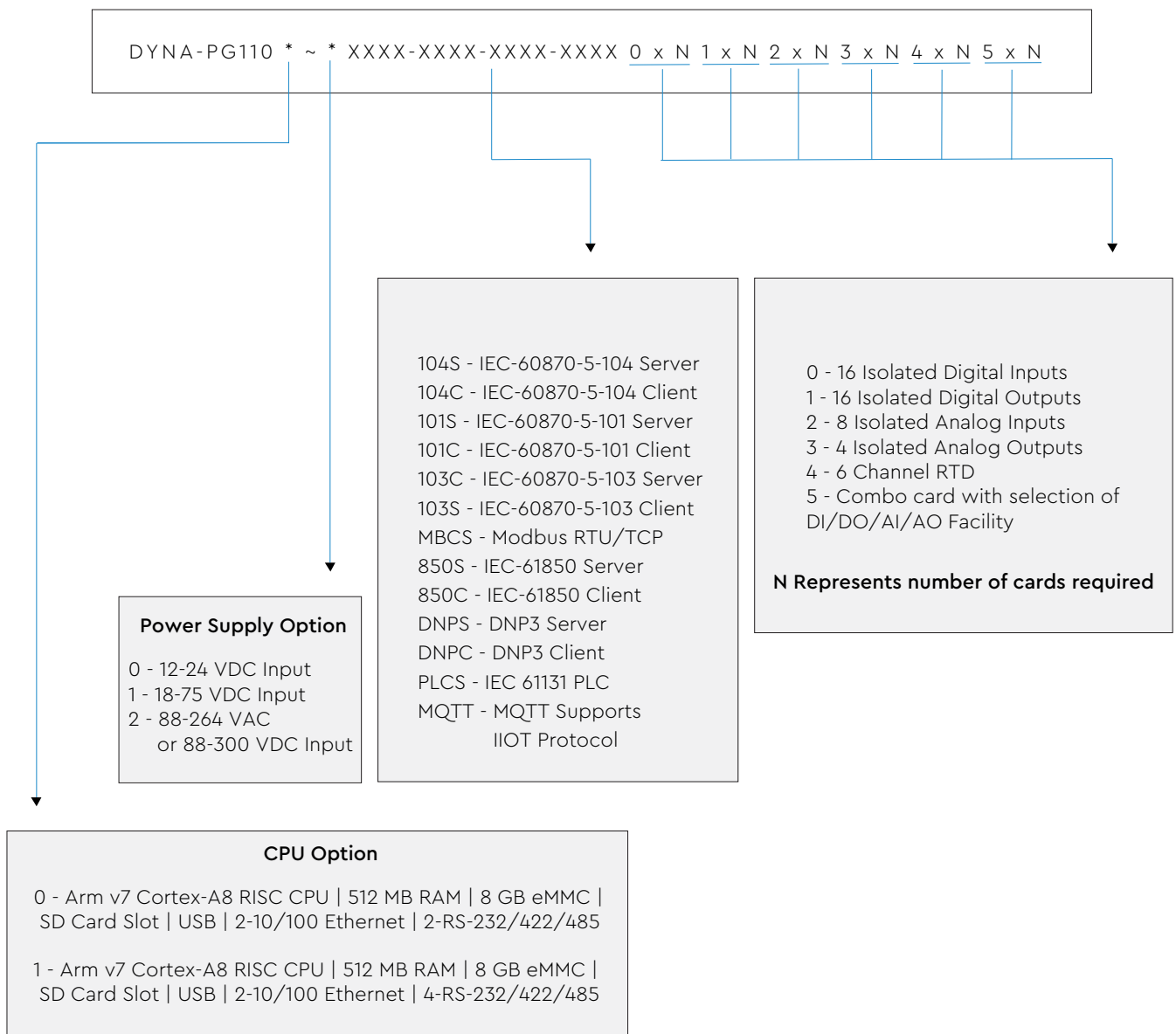
## Typical System Architecture



## Typical Applications using DYNA PG

- Distribution Network Automation
- Data Gateway
- Substation Asset Management Retro-fit
- Distributed Energy Resource Management
- Distributed Smart Grid Control and Management
- Cloud Interface of Utility Assets
- Industrial Asset Management and Condition Monitoring

## Ordering Info



**Example :** Part Number for 2 Serial Ports, 18-75 DC inputs, IEC-104 Client, IEC-101Cleint DNP Client & MQTT Protocols & with 16 DI, 16 DO & 4 AO will be : Dyna-PG-1101~0 104S 101C DNP MQTT 0 x 1- 1 x 1- 3 x 1